

PANIO

HW51200 User manual

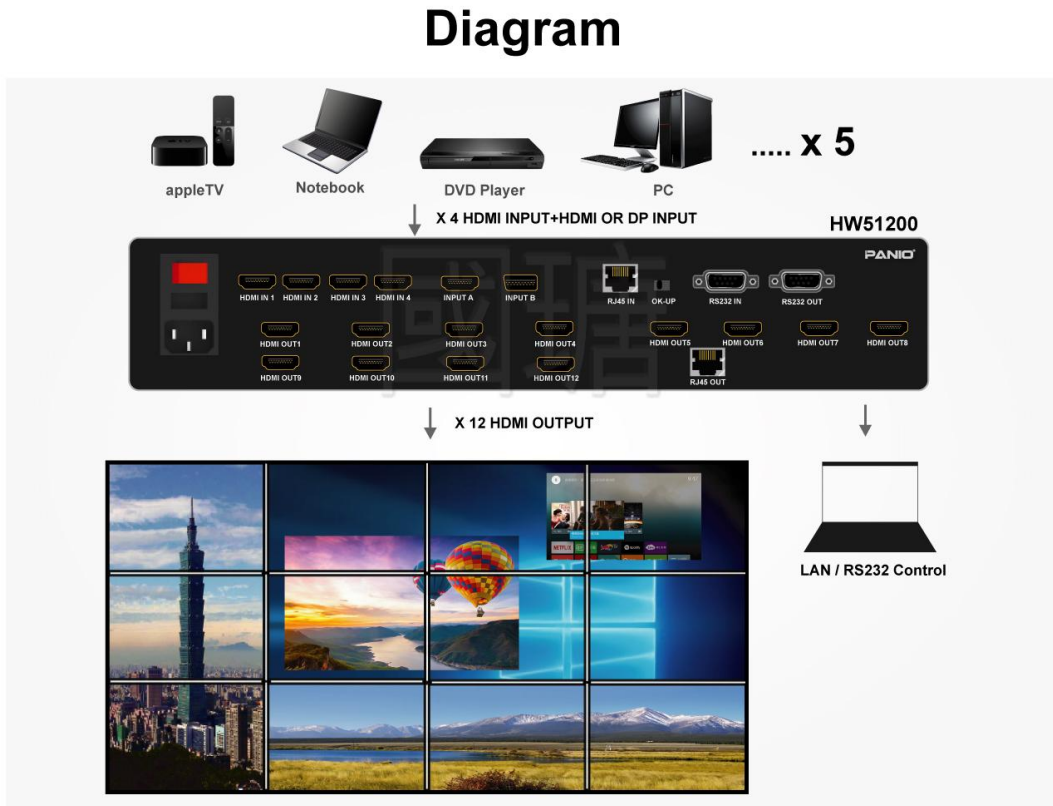
Contents

1. Packing	3
2. Diagram	3
3. PC Control software	3
4. Login interface	3
5. Settings.....	4
6. Operation.....	6
7. Tools.....	8
8. Management.....	10

1. Packing

No.	Name	Qty	Unit	No.	Name	Qty	Unit
1	HW51200	1	Pcs	3	Quick Guide	1	Pcs
2	Power cord	1	Pcs				

2. Diagram



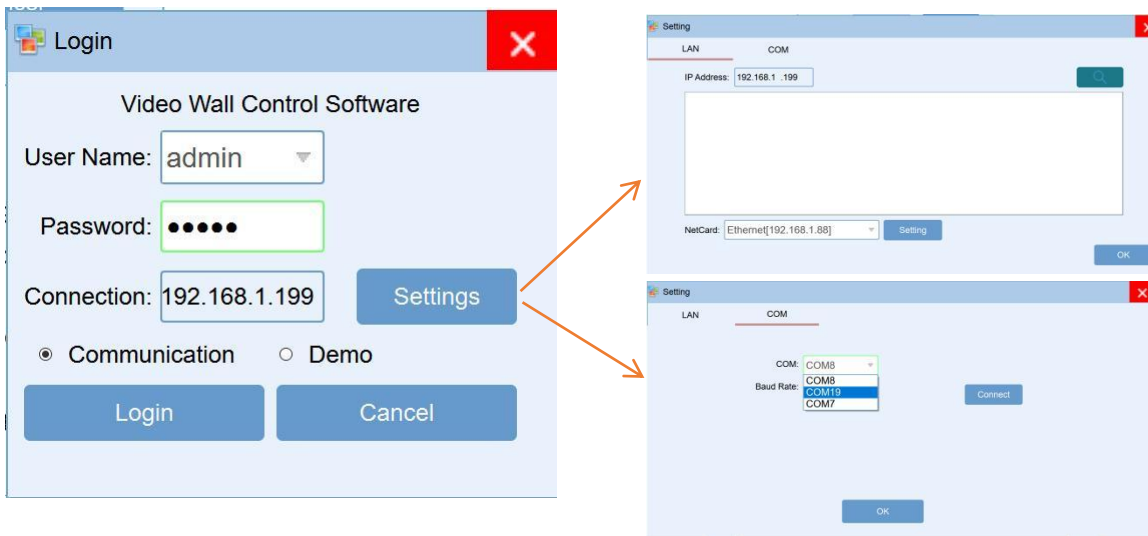
3. PC Control software

First, download the software and run the VWC executable file.

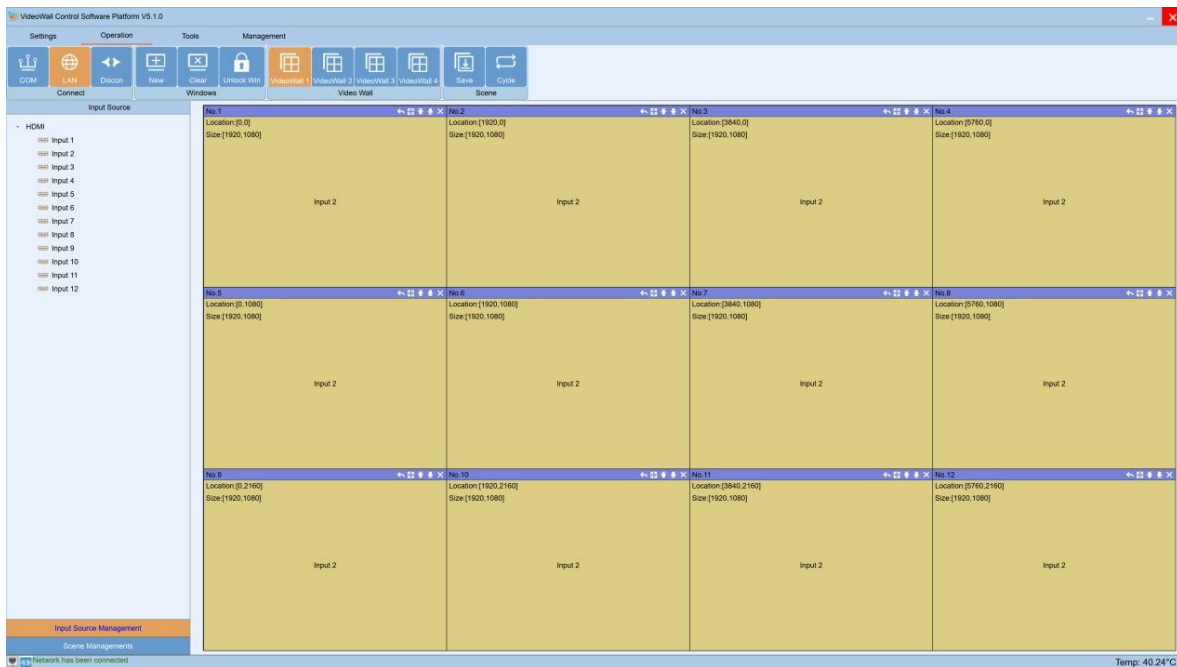
https://www.epanio.com.tw/download/VWC5.3-0617_EN.zip

4. Login interface

To click "Settings" login, it will be showing below interface, users can set up the LAN(IP) or the COM(RS232) as below, the default IP address is 192.168.1.199, and the baud rate is 115200.

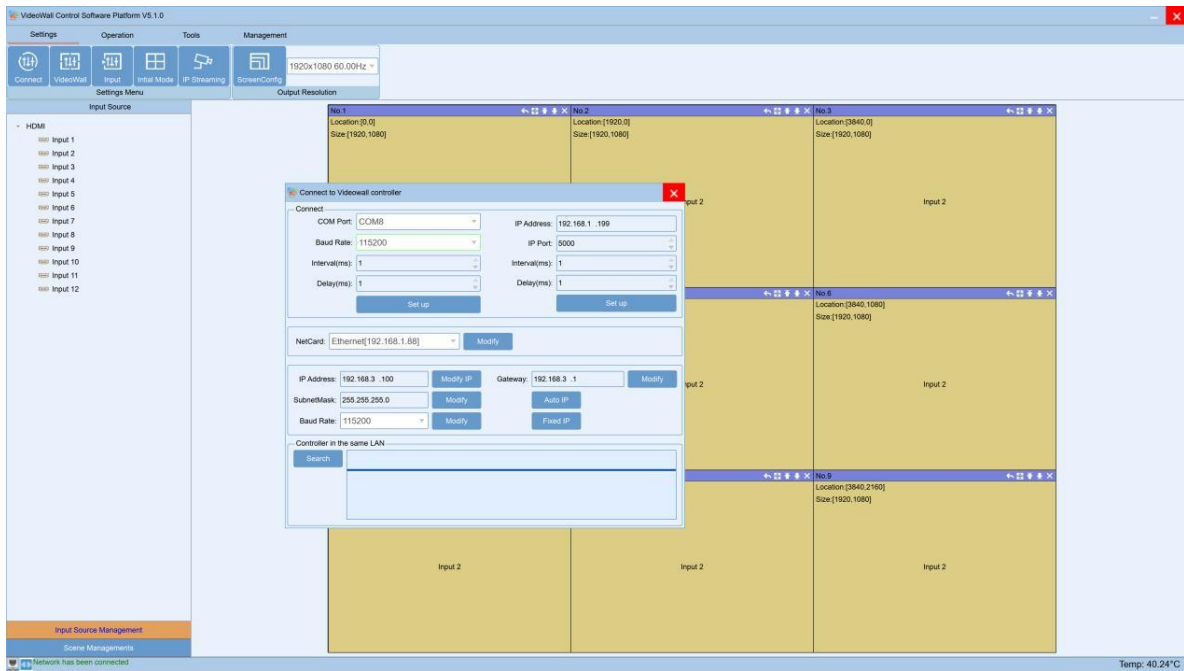


By default, the user name is Admin and the password is blank, then click "Login" button to log in, it will be showing the "Main" interface as below:



5. Settings

This interface allows users to configure connection methods, video wall settings, input options, and other parameters. The **Connection** section is designed for setting up communication between the control PC and the controller. Here, users can specify parameters such as the COM port and IP address. After making any changes, users must reconnect and restart the controller for the new settings to take effect.



For the VideoWall setting, it's for users to setup the Video Wall accordingly.

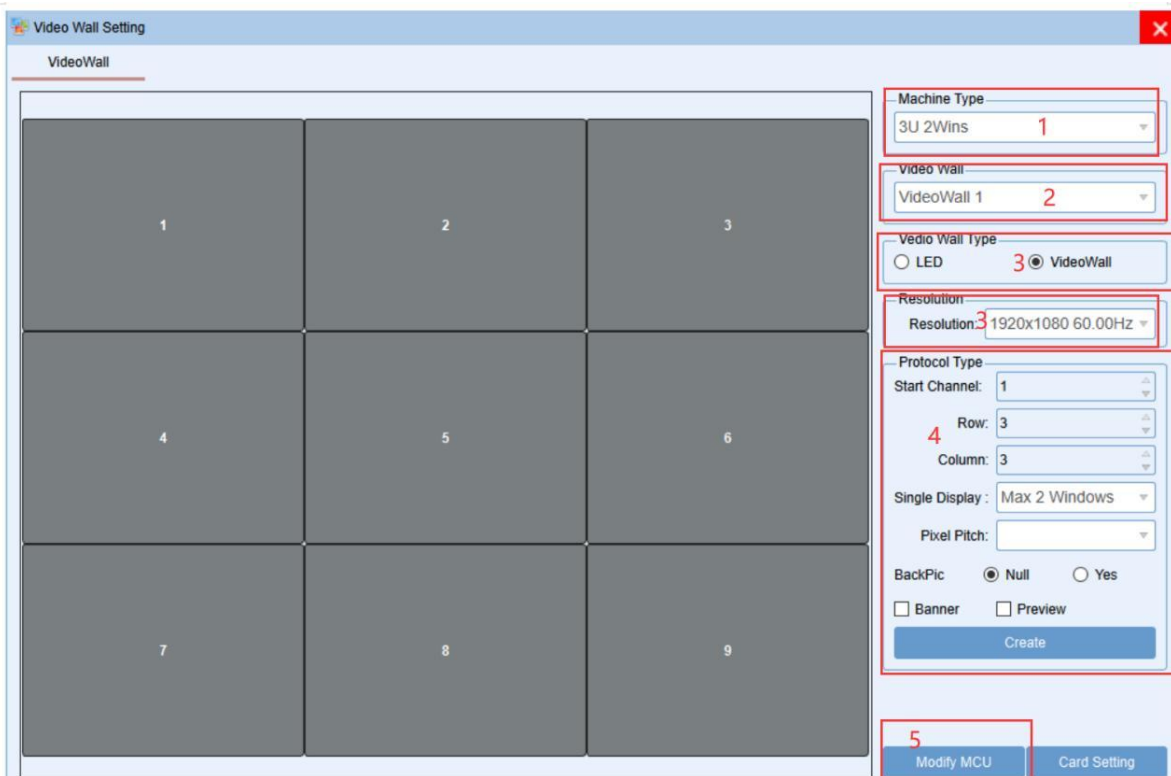
Step 1: According to the controller size & feature to choose the right one, here take example with the 3U 2 wins

Step2: Choose the video wall group, here take example VideoWall 1.

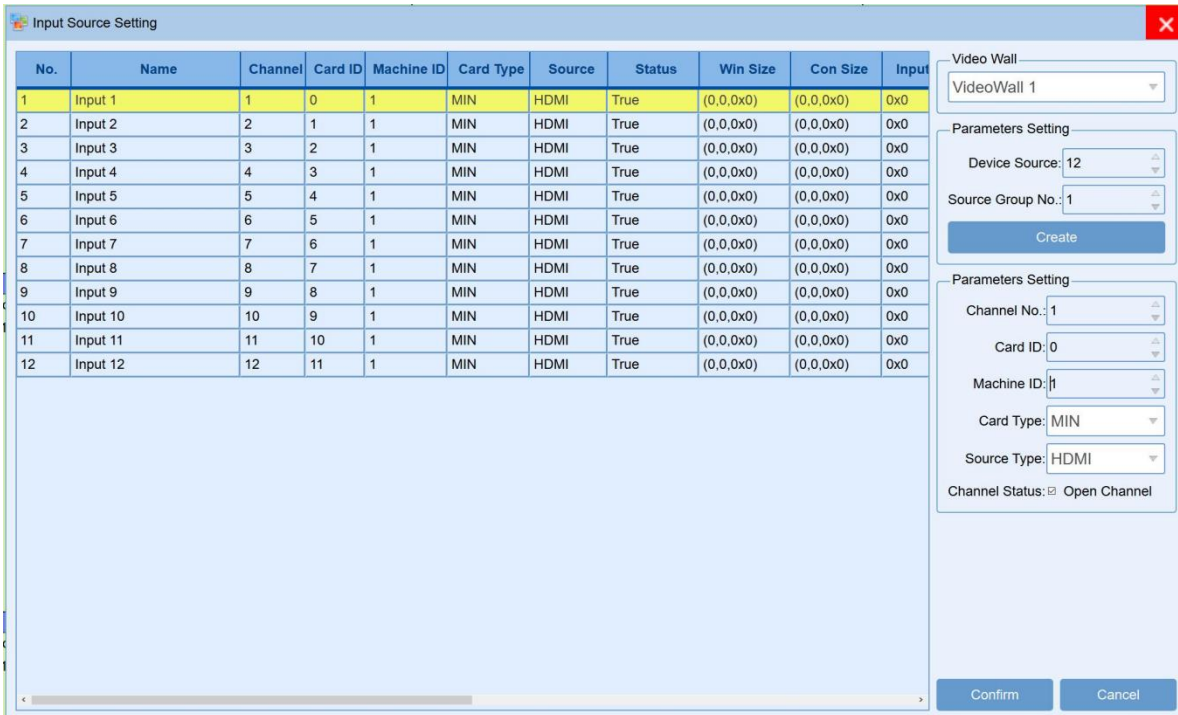
Step3: Choose the resolution for the video wall, usually recommend the 1920x1080P@60Hz.

Step4: Set up the Video Wall size, here take example of a 3x3 Video Wall, so the Row is 3, Column is 3, and the click "Create".

Step5: After all the above 4 steps, still need to click the "modify MCU" to finish the settings.



For the Input source setting, it's for users to setup the input source group, source and card type.



For the Initial mode, IP streaming and the Screen config settings are only used when have the specific cards plugged into the controller.

6. Operation

Under this interface, users can see the Connect, Windows, Video Wall and Scene those function.

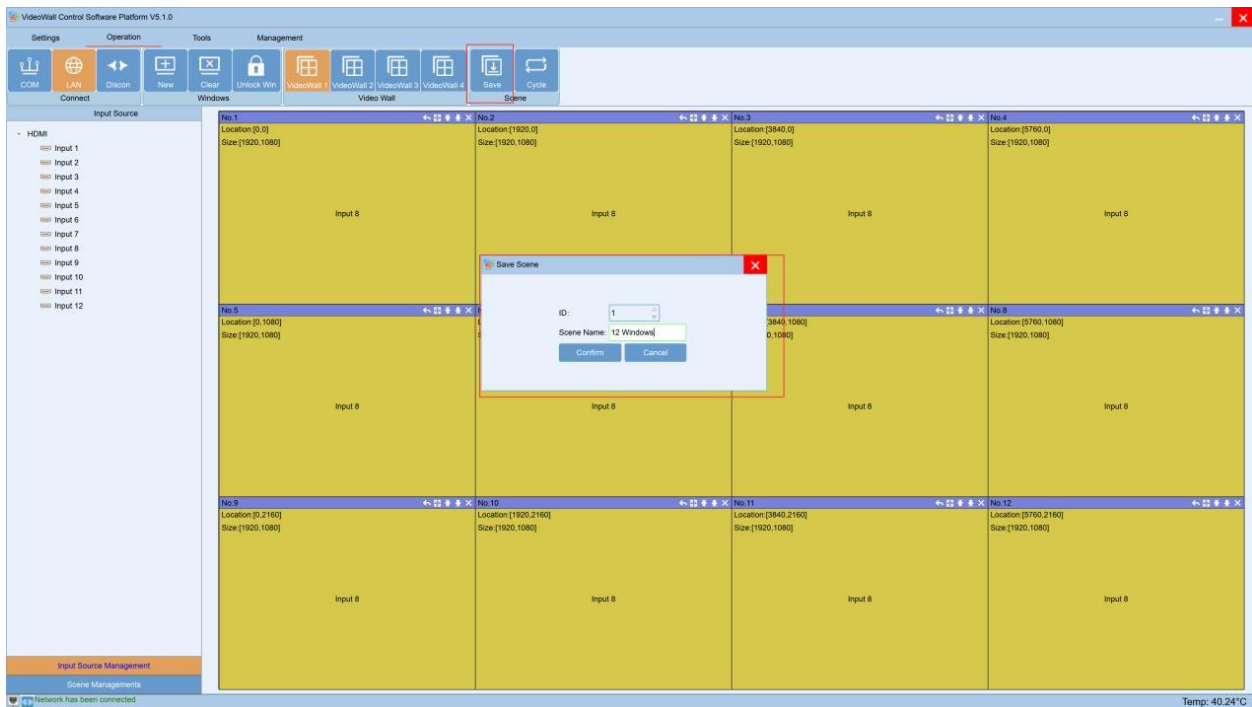


Connect is for users to click to sync with controller either by the COM, LAN or to Discon(disconnect). Once click the LAN or COM to sync, the software will pop-up and “wait” window to sync. Windows is for users to open a new window, clear all the windows or lock/unlock the windows Click “New”, it will open a window of the selected source to all the connected displays, also show the windows on the control software; Users also can select the source and then use the mouse to drag any size window on the video wall.

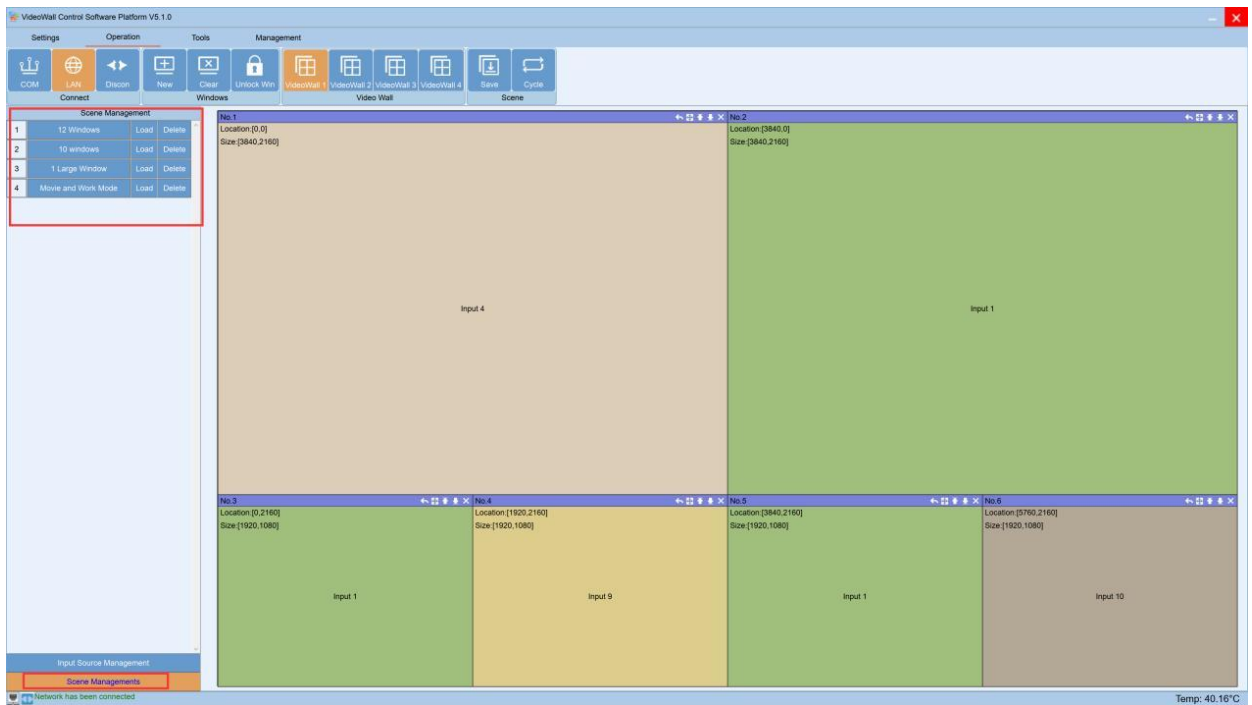
If click the “Clear” tap, it will close all the windows:

Video Wall is for users to select and control the specific Video Wall, this processor can support 4 video wall groups. Scene is for users to save the current switching status and setup for the scenes cycling.

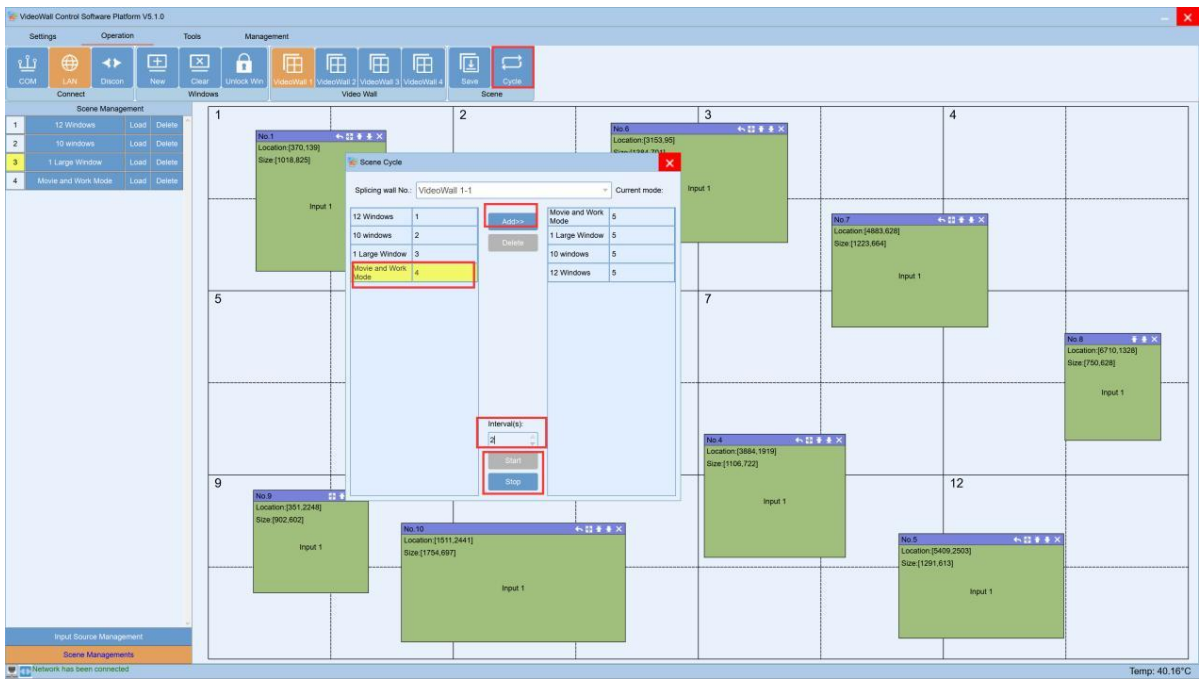
To save the current status, users will only need to click the “Save” button, it will pop-up the Save scene window, users can enter the scene name and click to save.



Users can click the “Scene Management” at the left down corner, it will show all the saved scenes. Then users can rename it, load or delete it.

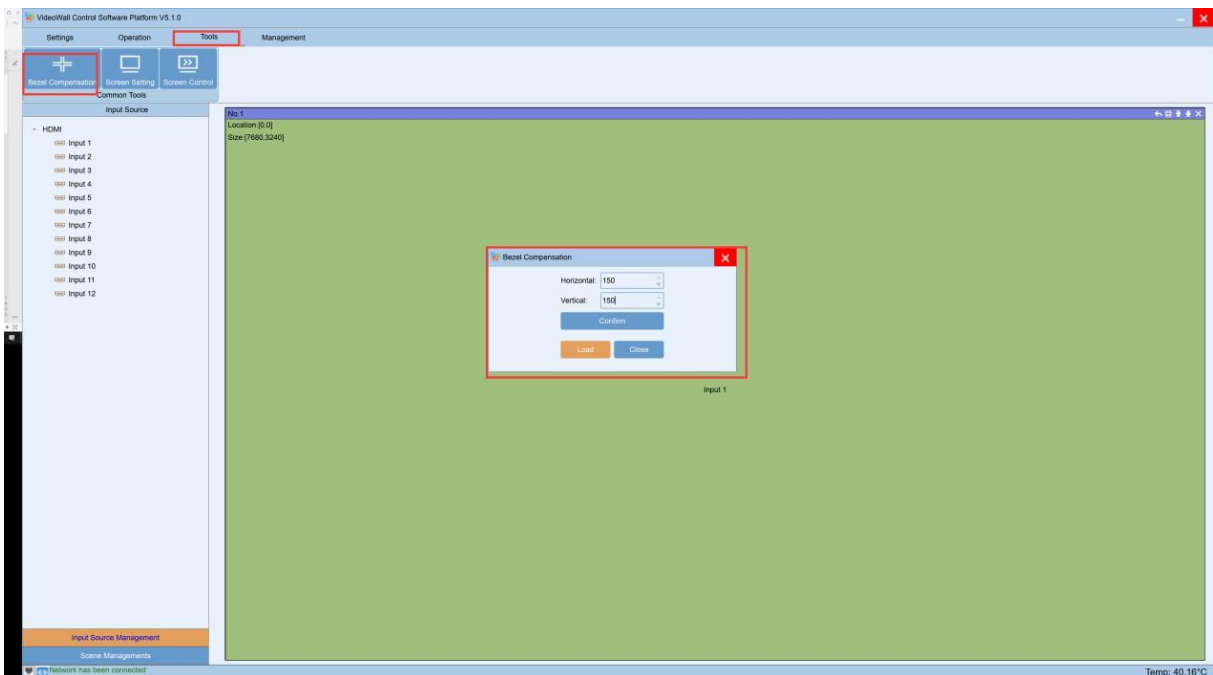


Users also can setup the scenes cycling, but click the “Cycle” button on the top of the control software.

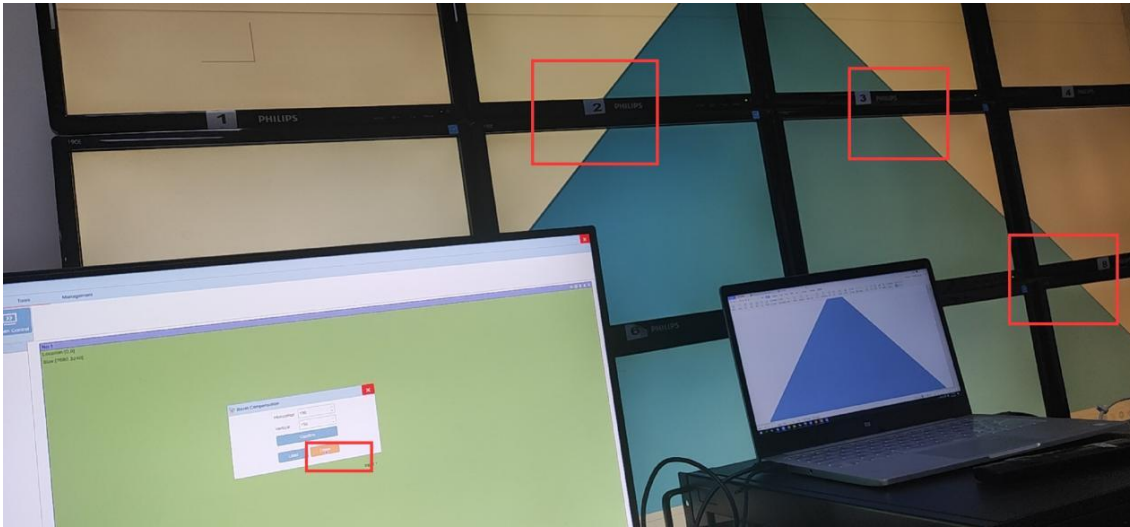


7. Tools

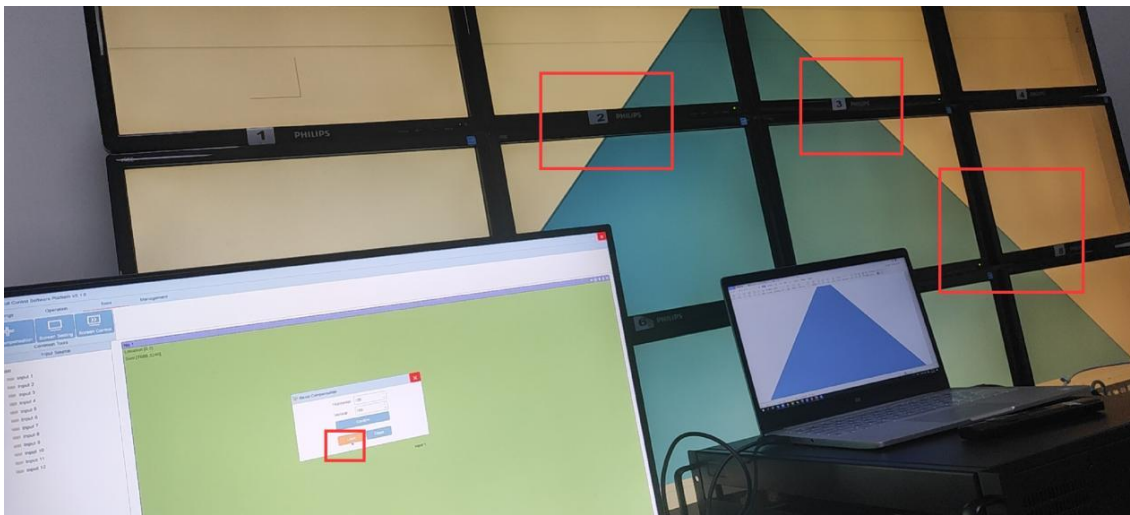
Under this interface, users can setup the bezel correction, screen settings, screen control. Bezel compensation is for the users who have old and large bezel TV, users can set up the Horizontal and Vertical parameter to correct the image showing the displays.



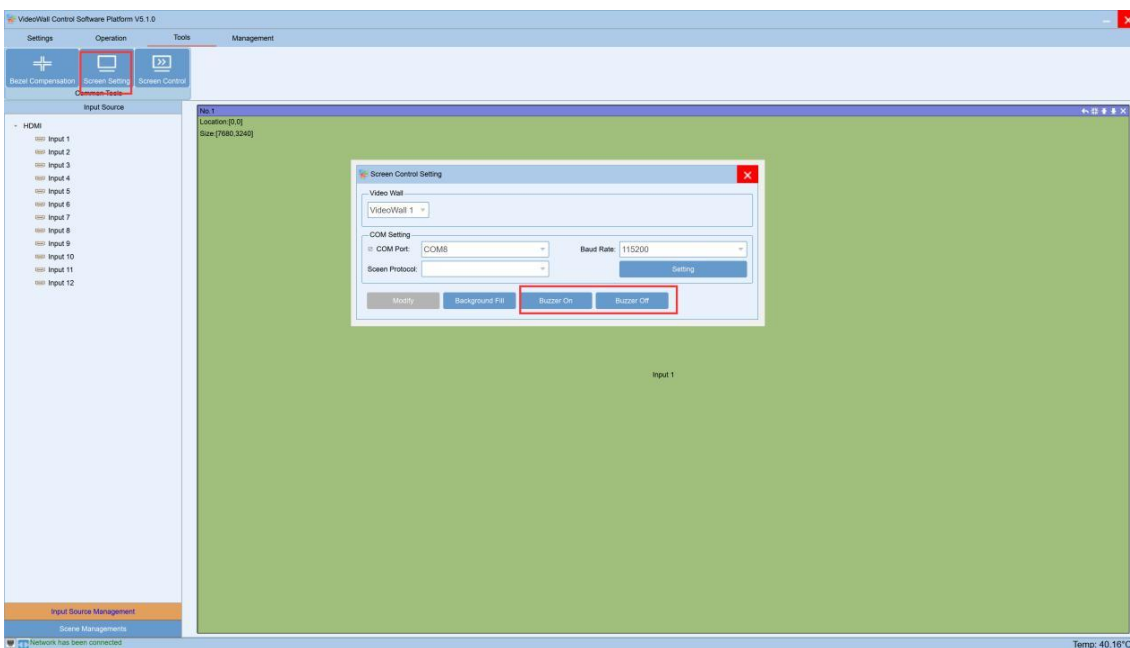
When no bezel correction or correction OFF, it will be showing as below:



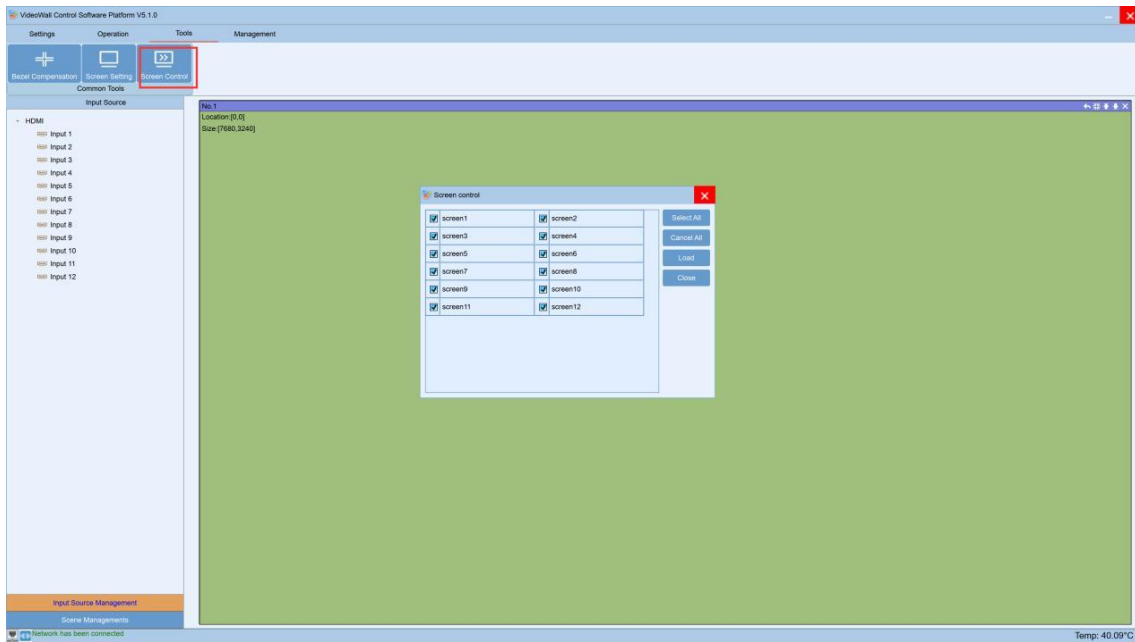
When with bezel correction or correction ON, it will be showing as below:



Screen setting is for the users to set up the parameter to control the screens, Turn on or turn off the beep sound of the controller.



The screen control is to select the screens for controller to control them, this function is mainly for turning off or turning on the screens. This function will need to make sure there's a RS232 cable connected the screens and controller, also need to know the COM commands for the screens.



8. Management

Under this interface, users can manage the different users to log in with different rights. To add a new user, will need to make sure it's logged in with under the Admin, then can add/ manage the users. A right click on the "admin", it will show the add users option:

