

**Modular Video Wall Controller with APP control**  
**HW01**

Version: 2022V2.3

## Safety Reminder

To protect the device and operating personnel from electrostatic discharge, you need to check and ensure that the device is grounding well before the device is powered on. Please observe the following when you install, use, maintain this equipment.

### Disposal Instruction (US)

For better protection of our earth, please don't throw this electronic device into municipal trash bin when discarding.

To minimize pollution and ensure utmost protection of the global environment, please recycle the product. For more information about the collection and recycling of Waste Electrical and Electronic Equipment (WEEE), please contact your local dealers.

### Safety Instructions

1. Please read these safety instructions carefully.
2. Please keep this User Manual for later reference.
3. Please disconnect this equipment from connector before cleaning. Don't use liquid or sprayed detergent for cleaning. Use moisture sheet or cloth for cleaning.
4. Make sure the equipment is connected to the power source with the correct voltage, frequency, and ampere.
5. All cautions and warnings on the equipment should be noted.
6. Never pour any liquid into opening, this could cause fire or electrical shock.
7. Never open the equipment. For safety reason, the equipment should only be opened by qualified service personnel.
8. If one of the following situations arises, get the equipment checked by a service personnel :
  - a. Liquid has penetrated into the equipment.
  - b. The equipment has been exposed to moisture.
  - c. The equipment has not work well or you can not get it work according to user's manual.
  - d. The equipment has dropped and damaged.
9. If the equipment has obvious sign of breakage.
10. Ambient operation temperature: 0 ~ 45 degrees.
11. Risk of overheating! Don't put operating/installing equipment inside too closed space, be sure the installation space at least 1 to 2 inches or 2 to 5 cm of space for ventilation. To ensure that other objects do not cover the equipment.

### Notice: Peripheral devices

Only peripherals (input/output devices, terminals,player, etc.) certified to comply with Class B limits may be attached to this equipment. Operation with non-certified peripherals is likely to result in interference to radio and TV reception.

### Caution

Changes or modifications not expressly approved by the manufacturer could void the user's authority, which is granted by the Federal Communications Commission, to operate this equipment.

## PC Control software

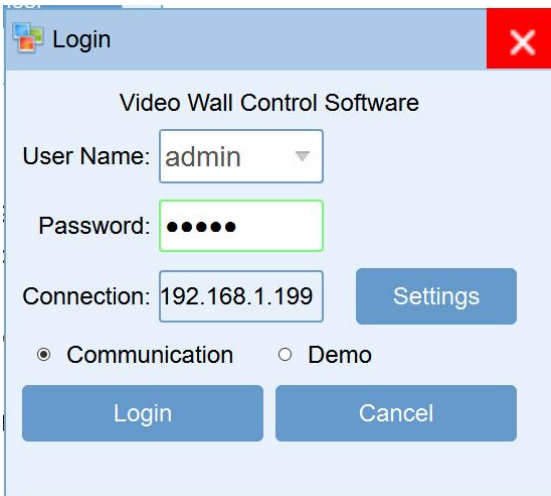
To protect environment, this control software will be sent by email and can download from the dealers website, after download or have the software ready, please follow the guide below to get started:

When open the control software folder, please click and run the "VWC\_V5.1" .exe file

vcruntime140.dll	6/9/2016 10:46 PM	Application extension	82 KB
VWC_V5.1	9/2/2020 10:15 AM	Application	7,814 KB

## Login interface:

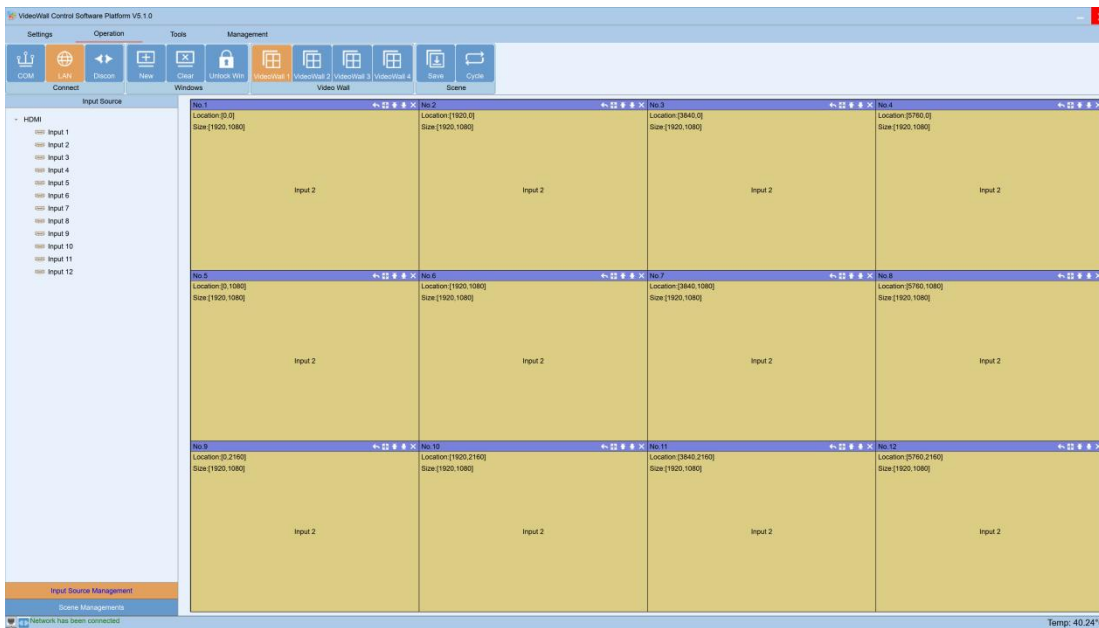
By default, the user name is Admin and the password is blank, then click "OK" button to log in.



To click "Settings" login, it will be showing below interface, users can set up the LAN(IP) or the COM(RS232) as below, the default IP address is 192.168.1.199, and the baud rate is 115200.

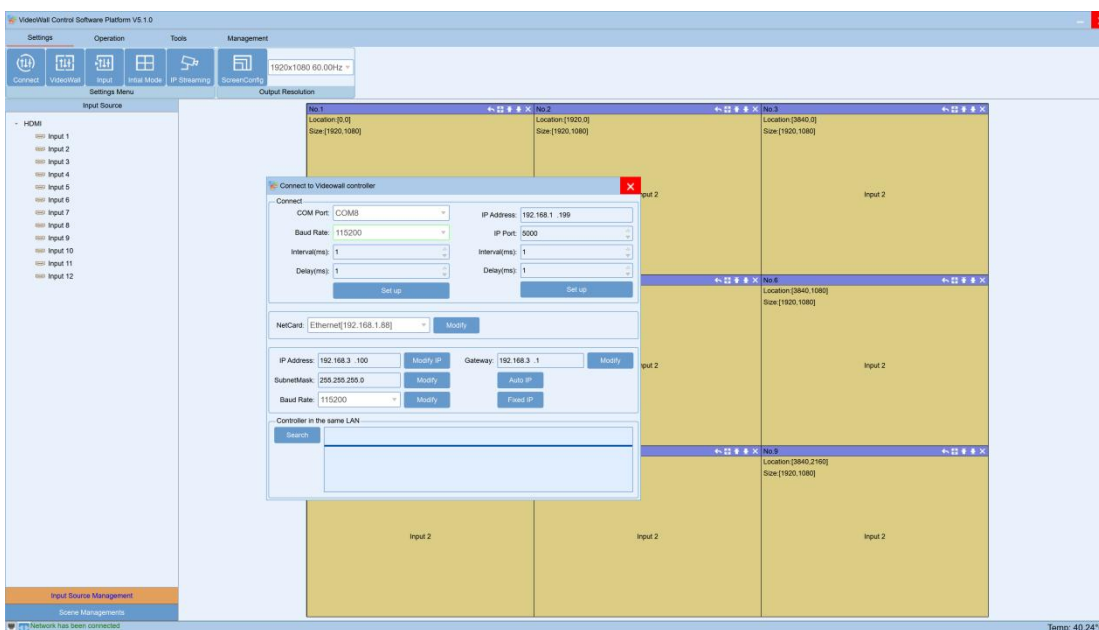


After click OK to login, it will be showing the "Main" interface as below:

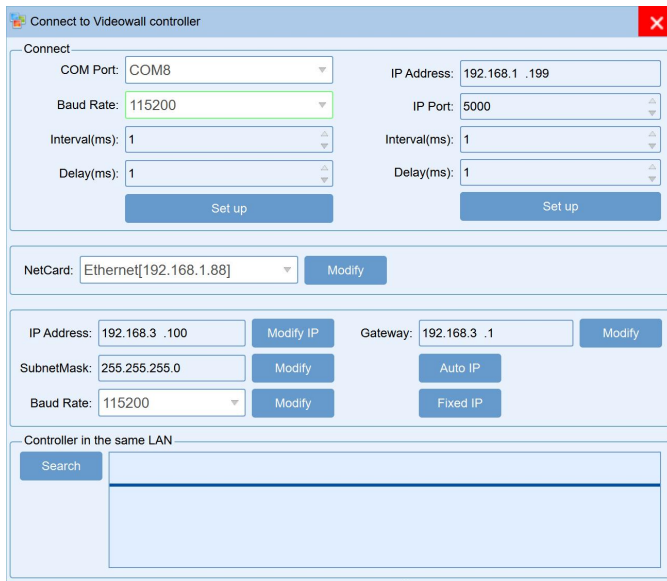


## Settings

This interface is for users to setup the connect method, Video Wall, Input etc settings:



Connect is for users to setup the communication methods for the control PC and the controller, users can set up the COM and IP address those parameters here. After modified the parameters, will need to reconnect and restart the controller.



For the **VideoWall** setting, it's for users to setup the Video Wall accordingly.

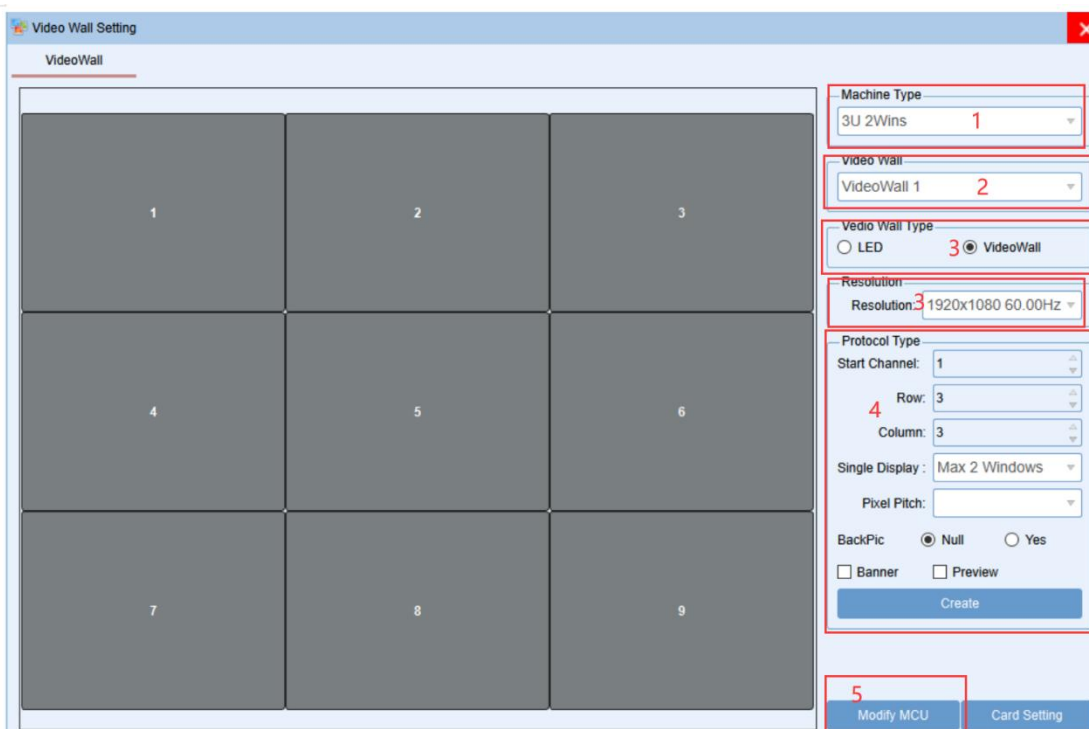
**Step 1:** According to the controller size&feature to choose the right one, here take example with the 3U 2 wins

**Step2:** Choose the video wall group, here take example VideoWall 1.

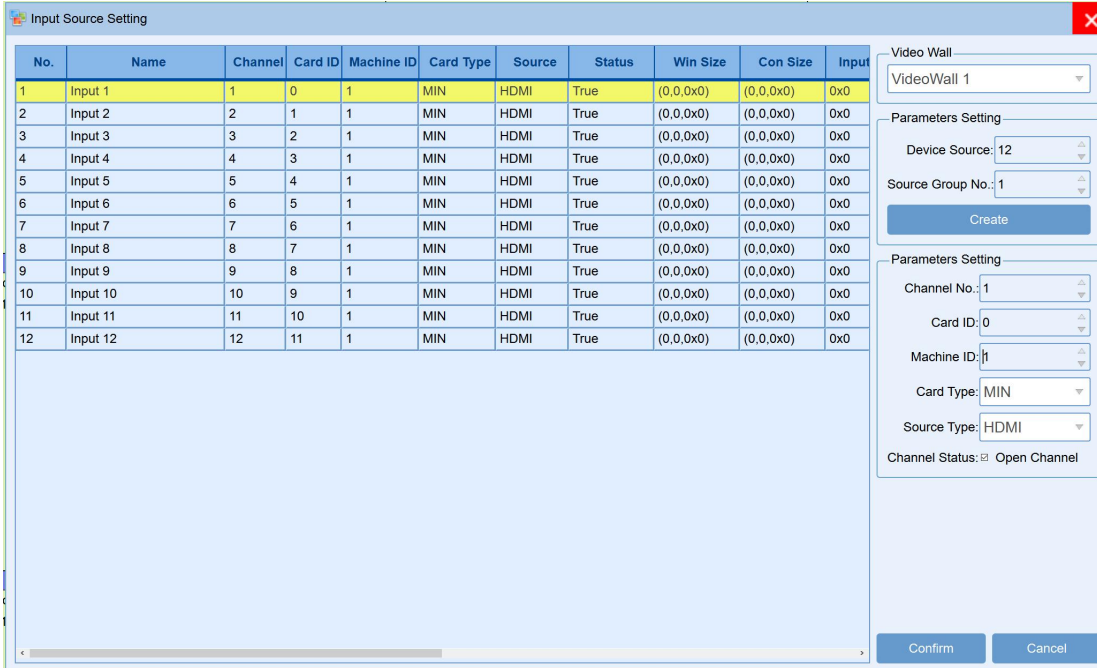
**Step3:** Choose the resolution for the video wall, usually recommend the 1920x1080P@60Hz.

**Step4:** Set up the Video Wall size, here take example of a 3x3 Video Wall, so the Row is 3, Column is 3, and the click "Create"

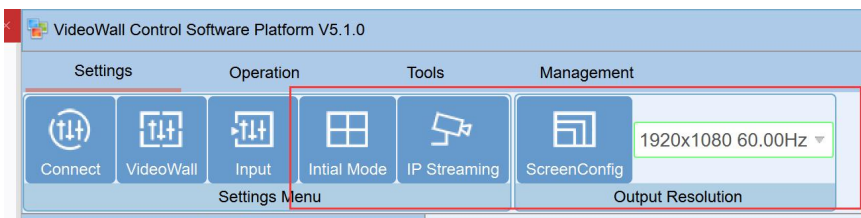
**Step5:** After all the above 4 steps, still need to click the "modify MCU" to finish the settings.



For the **Input source** setting, it's for users to setup the input source group, source and card type



For the **Initial mode, IP streaming and the Screen config** settings are only used when have the specific cards plugged into the controller.



## Operation

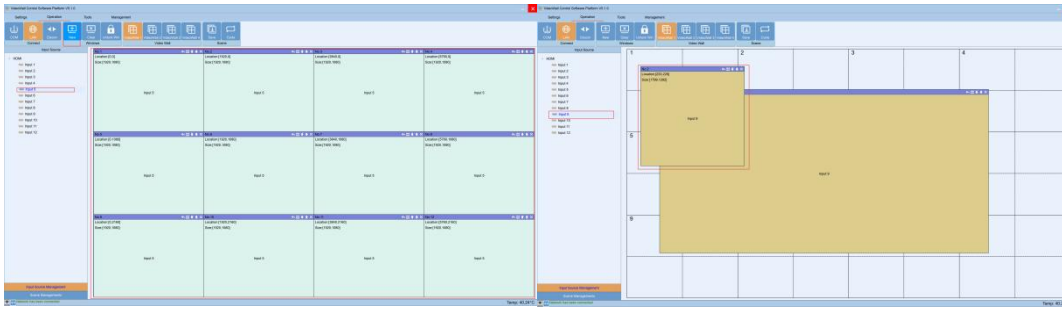
Under this interface, users can see the **Connect, Windows, Video Wall** and **Scene** those function.



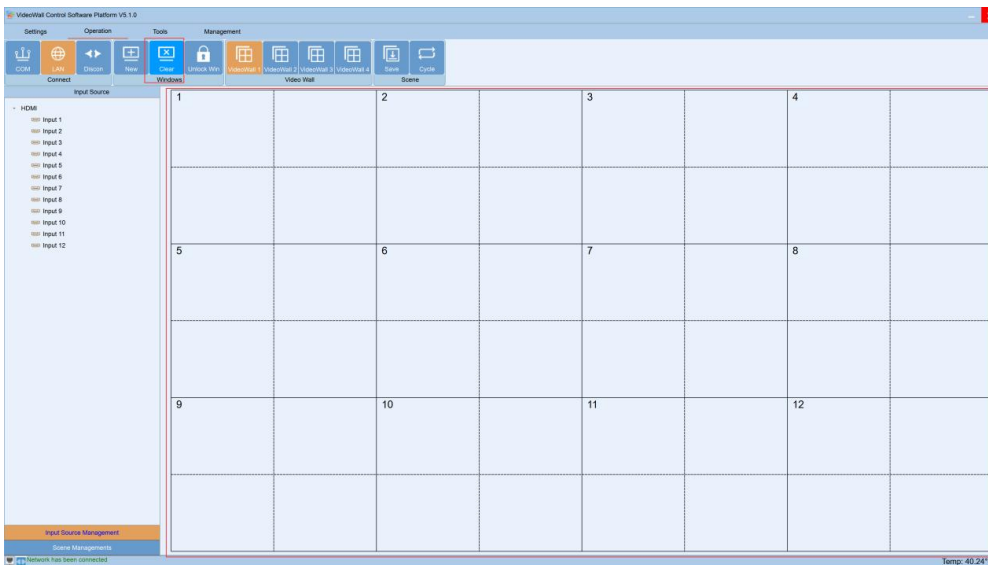
**Connect** is for users to click to sync with controller either by the COM, LAN or to Discon(disconnect). Once click the LAN or COM to sync, the software will pop-up and “wait” window to sync.

**Windows** is for users to open a new window, clear all the windows or lock/unlock the windows

Click “New”, it will open a window of the selected source to all the connected displays, also show the windows on the control software; Users also can select the source and then use the mouse to drag any size window on the video wall.



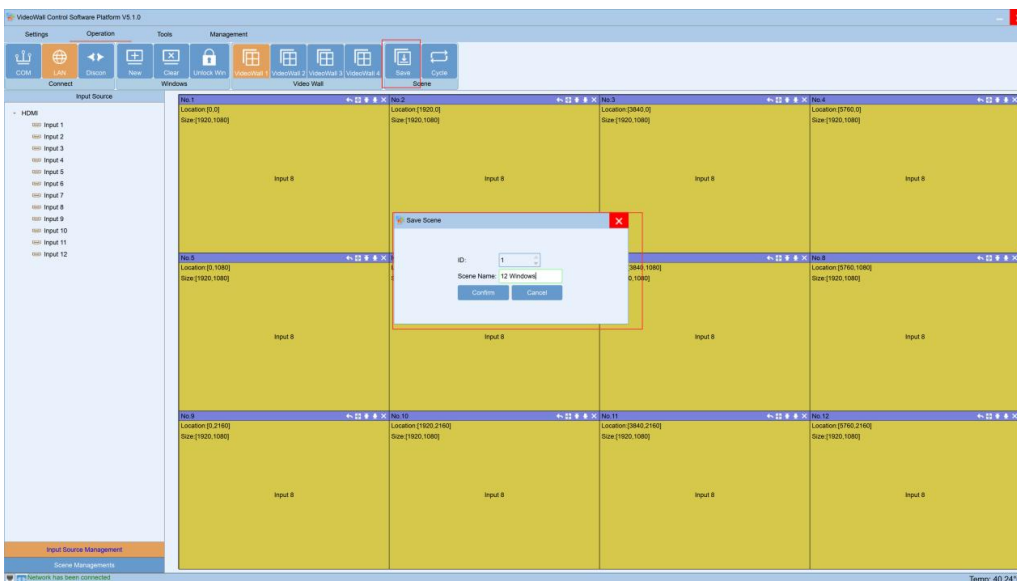
If click the “Clear” tap, it will close all the windows:



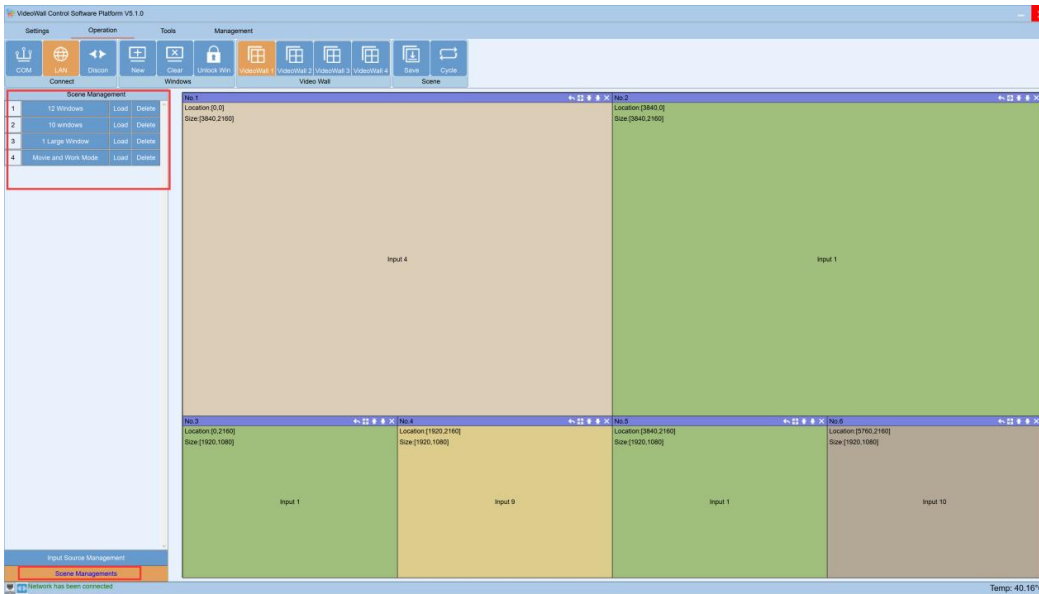
**Video Wall** is for users to select and control the specific Video Wall, this processor can support 4 video wall groups.

**Scene** is for users to save the current switching status and setup for the scenes cycling

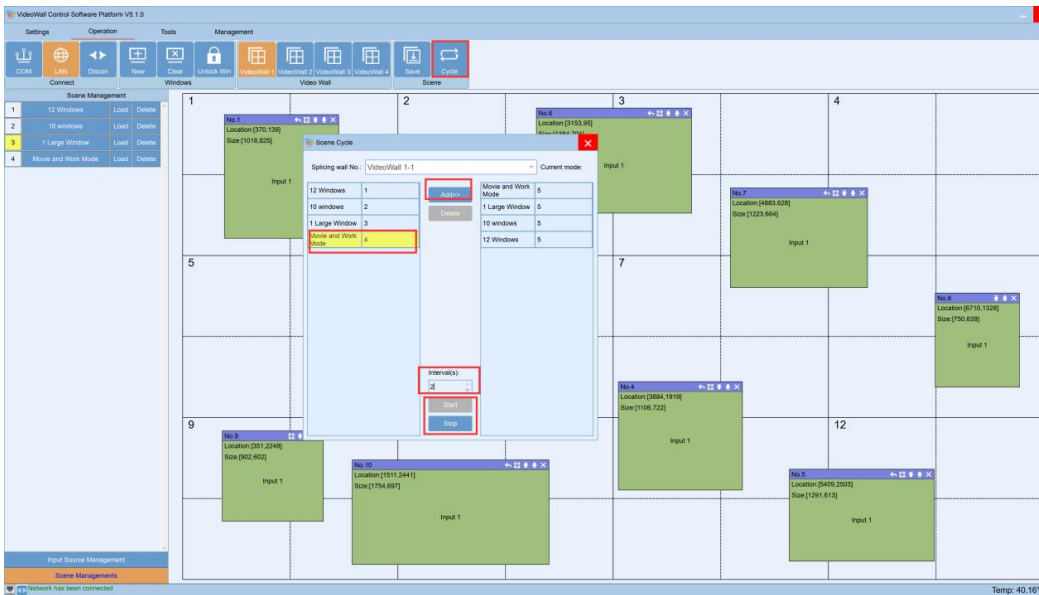
To save the current status, users will only need to click the “Save” button, it will pop-up the Save scene window, users can enter the scene name and click to save.



Users can click the “Scene Management” at the left down corner, it will show all the saved scenes. Then users can rename it, load or delete it.



Users also can setup the scenes cycling, but click the “Cycle” button on the top of the control software.

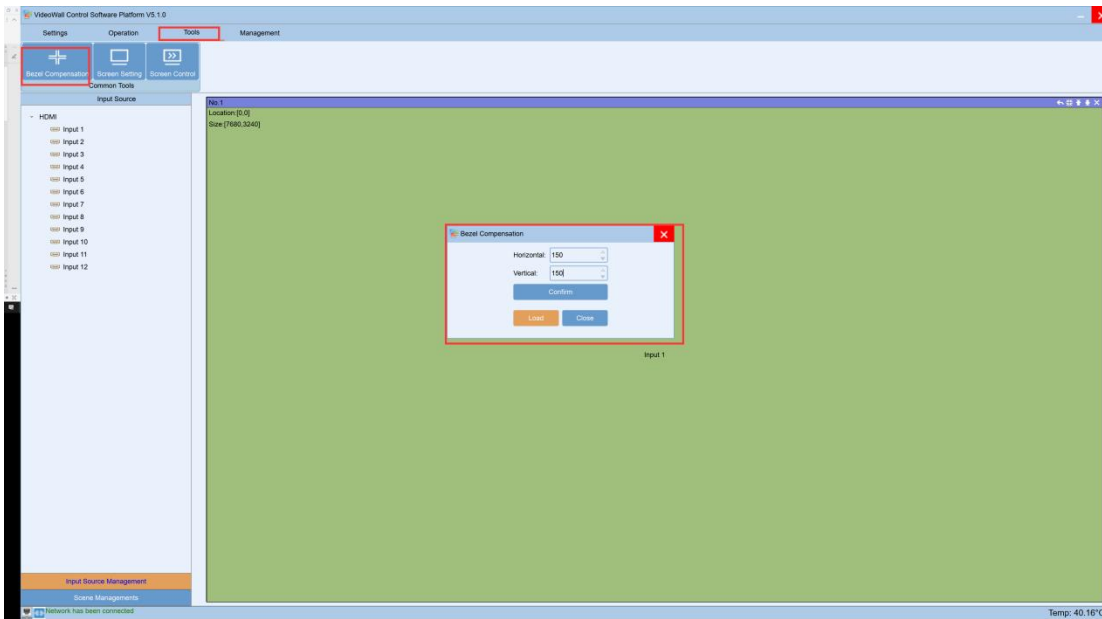


## Tools

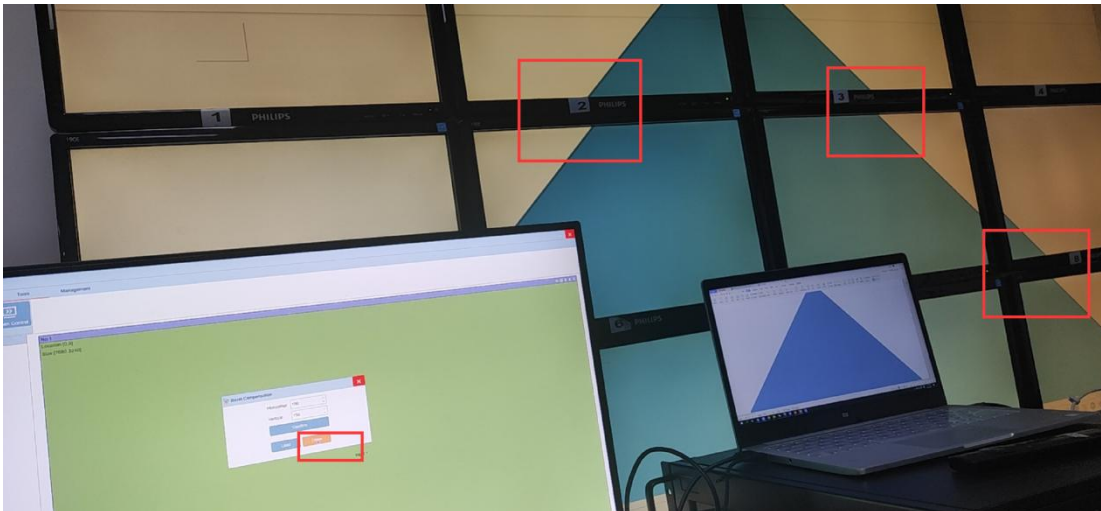
Under this interface, users can setup the bezel correction, screen settings, screen control.

**Bezel compensation** is for the users who have old and large bezel TV, users can set up the Horizontal and Vertical parameter to correct the image showing the displays.

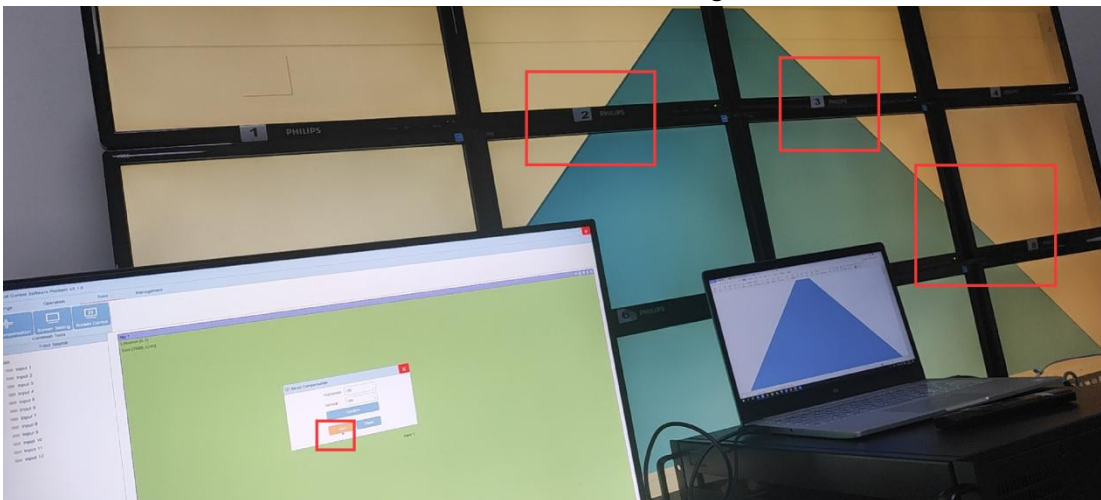




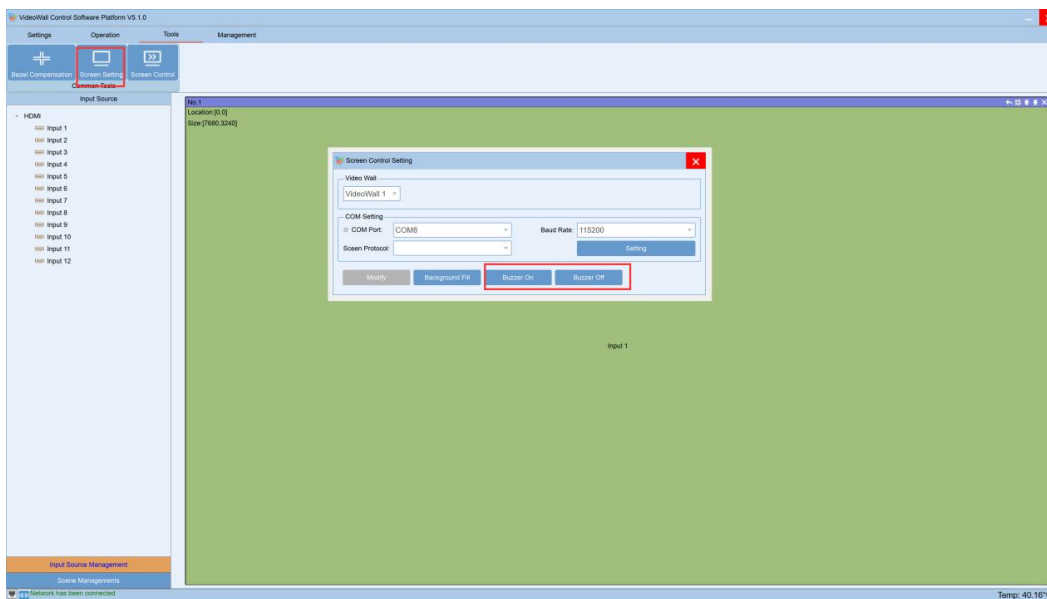
When no bezel correction or correction OFF, it will be showing as below:



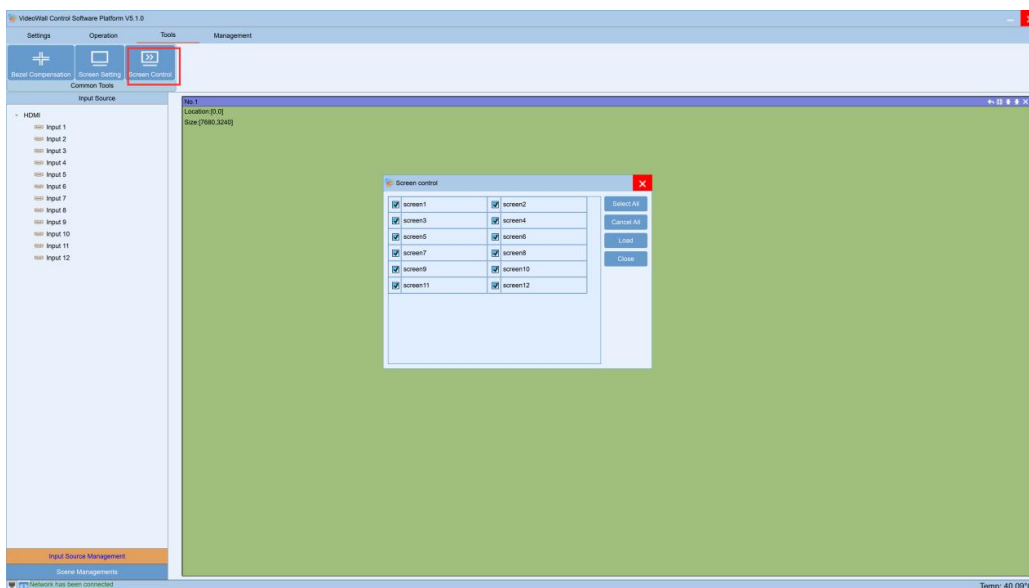
When with bezel correction or correction ON, it will be showing as below:



Screen setting is for the users to set up the parameter to control the screens, Turn on or turn off the beep sound of the controller.

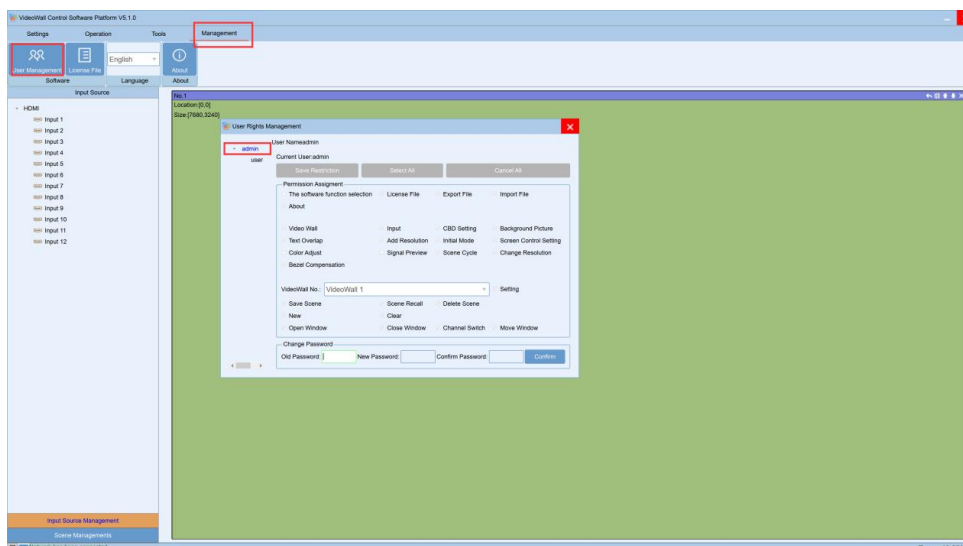


The screen control is to select the screens for controller to control them, this function is mainly for turning off or turning on the screens. This function will need to make sure there's a RS232 cable connected the screens and controller, also need to know the COM commands for the screens.



## Management

Under this interface, users can manage the different users to log in with different rights. To add a new user, will need to make sure it's logged in with under the Admin, then can add/manage the users. A right click on the "admin", it will show the add users option:

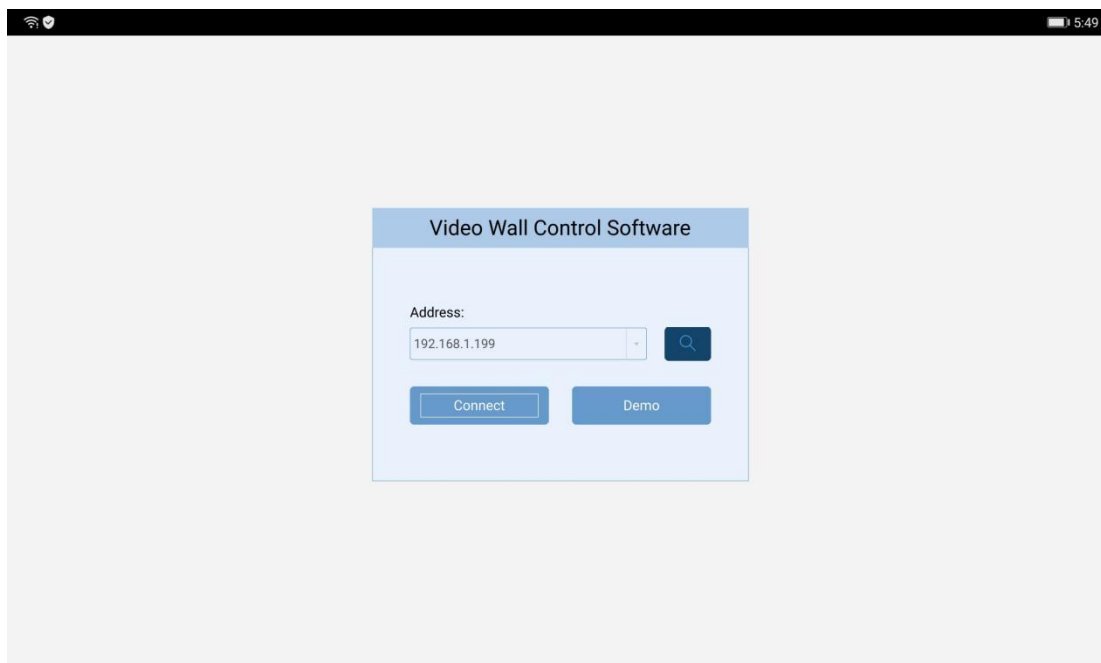


## Android APP Control

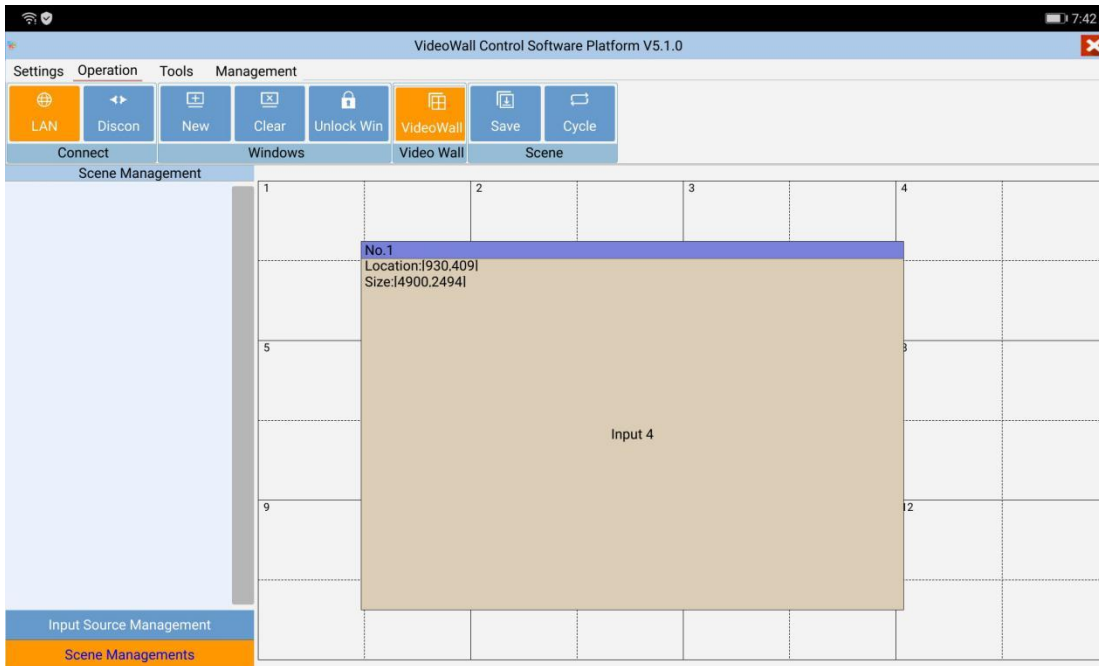
This video wall controller also can support the Android tablet control, users can get the APK. File from the local dealers.

To use the APP control, it will need to make sure the controller is connected to a WIFI router, and the control tablet needs to connect to the same network. After those settings, the APP control is ready to go:

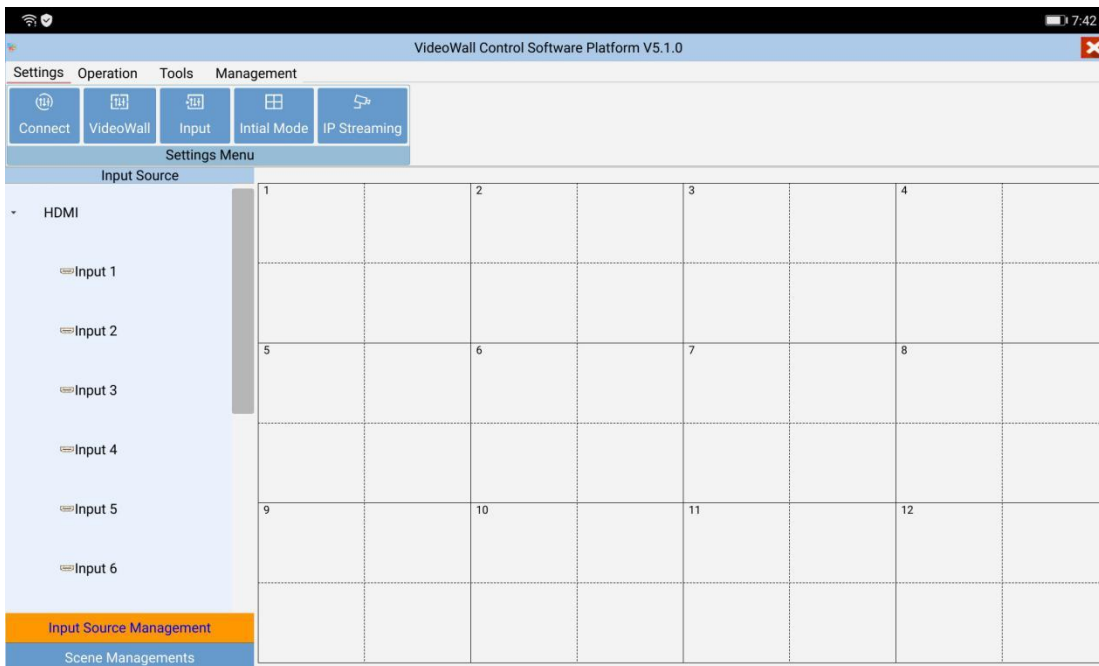
Click the “search” icon, it will fill out the IP address automatically, and then click “connect” to login.



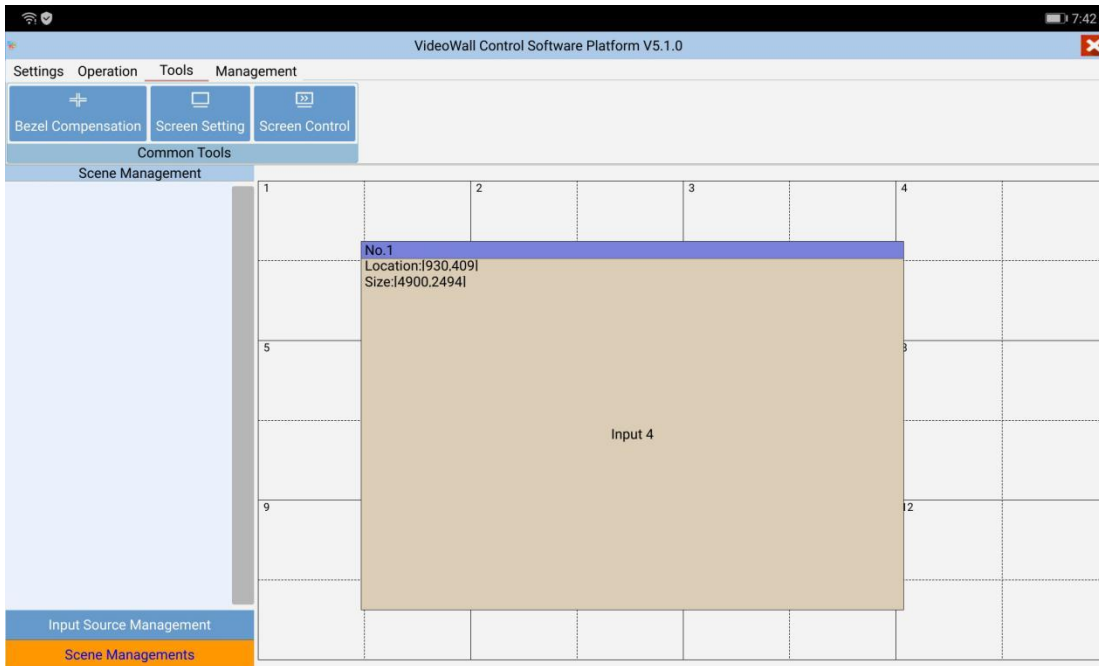
After login, it will be showing the similar to the PC control software, the operation tap:



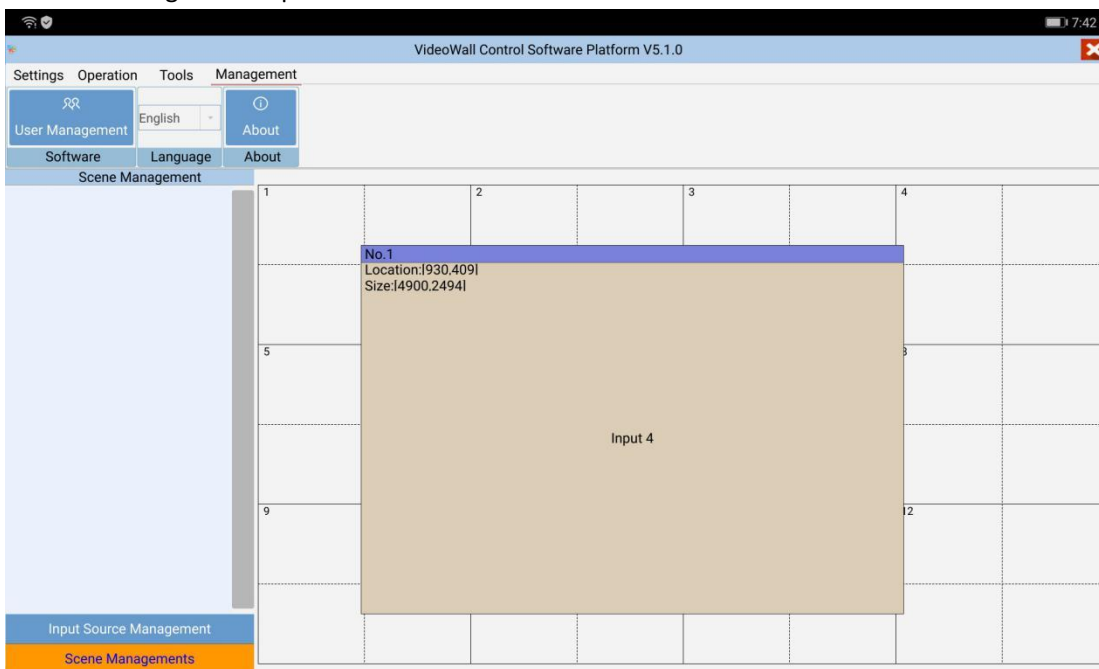
The Settings tap:



The tools tap:

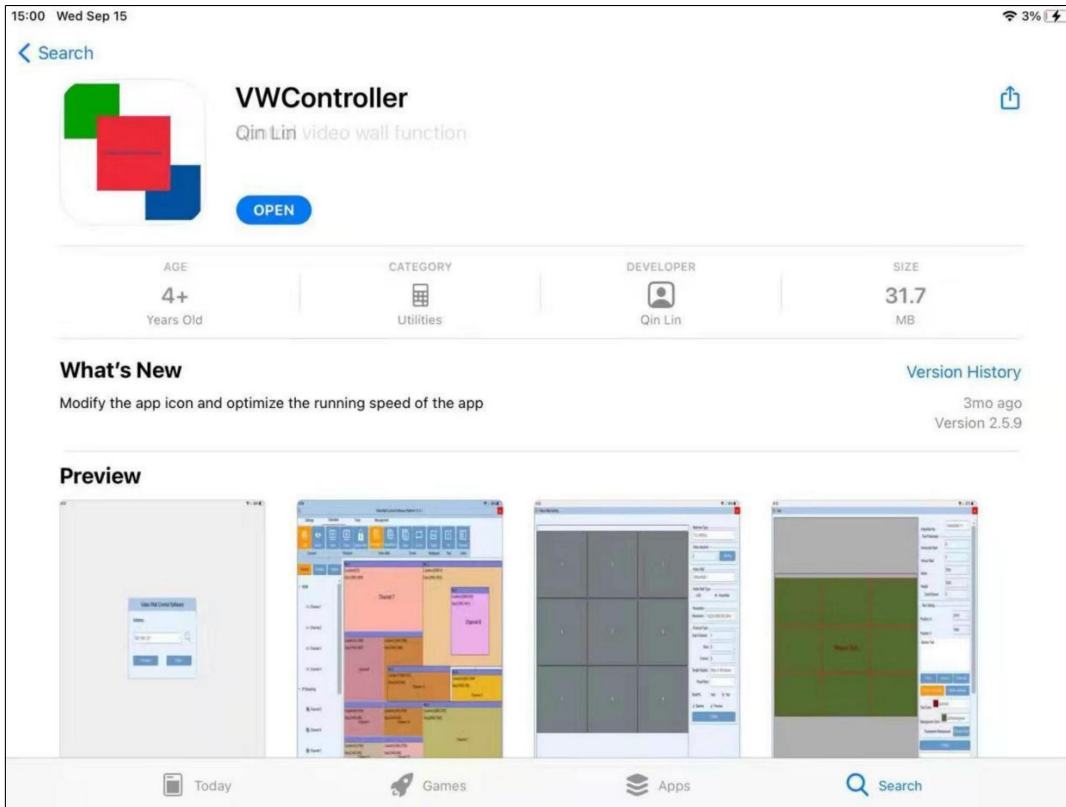


And the management tap:

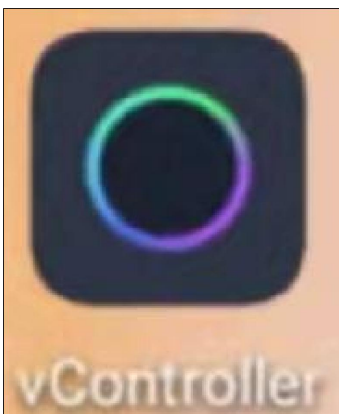


## iOS APP control

For iOS users just need to download the APP from the application store by searching the name "VWController". As the screenshot below:

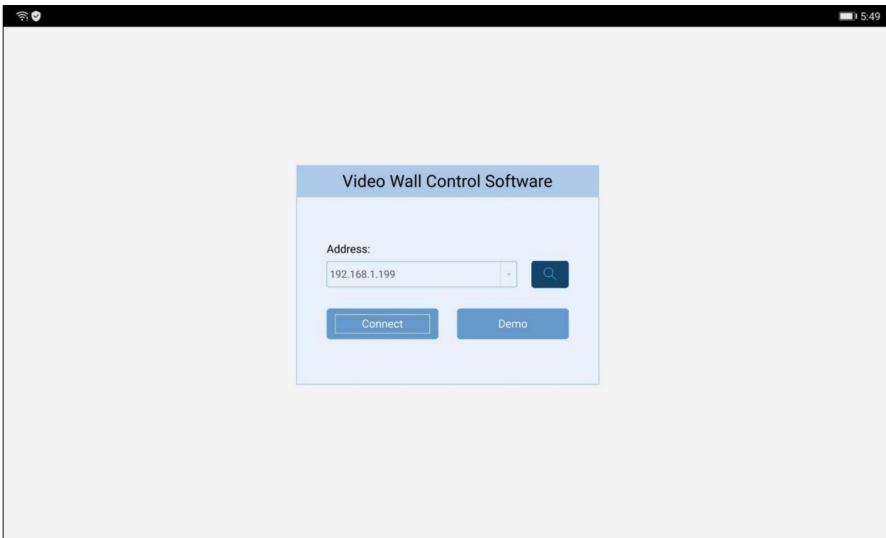


For Android users, they can get the APK. File from the local dealers to install directly. See the APP screenshot below:

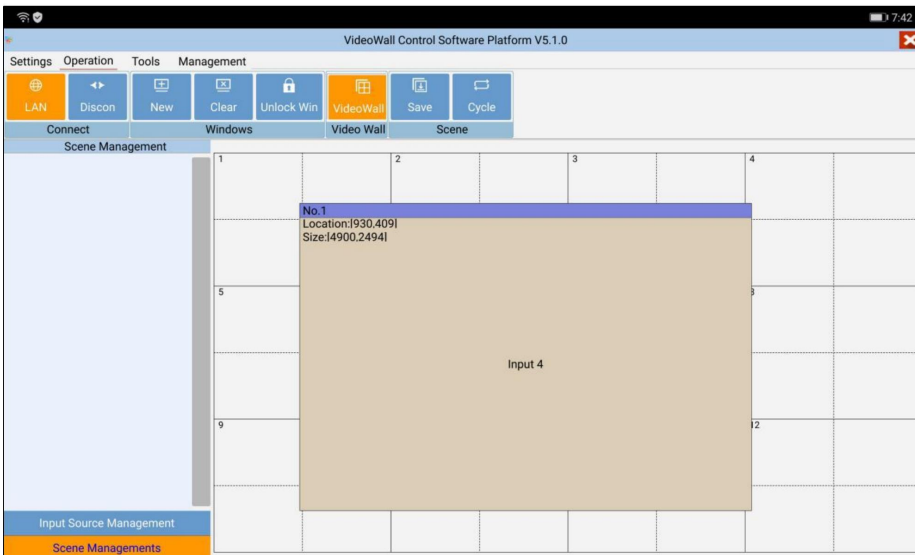


To use the APP control, it will need to make sure the controller is connected to a WIFI router, and the control iPad or tablet need to connect to the same network. After those settings, the APP control is ready to go:

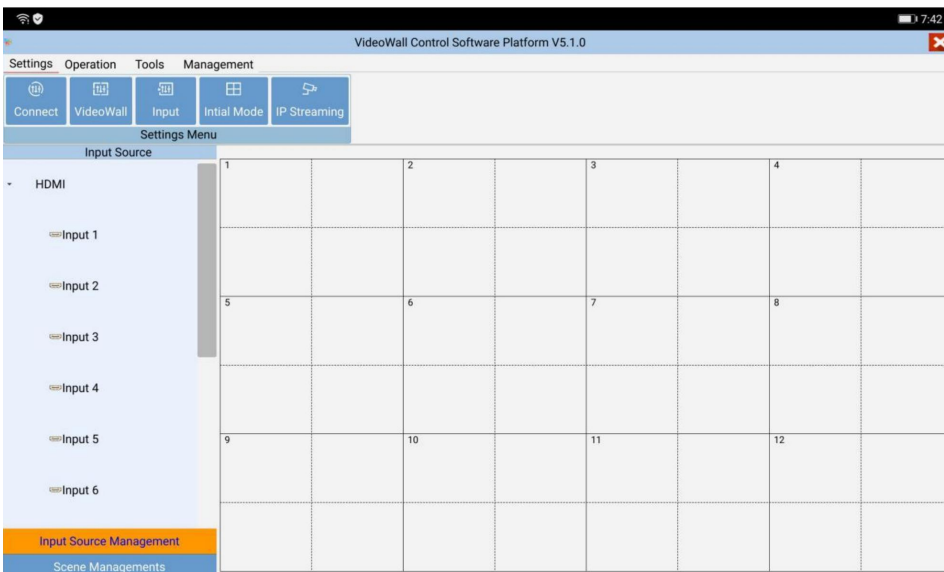
Click the “search” icon, it will fill out the IP address automatically, and then click “connect” to login.

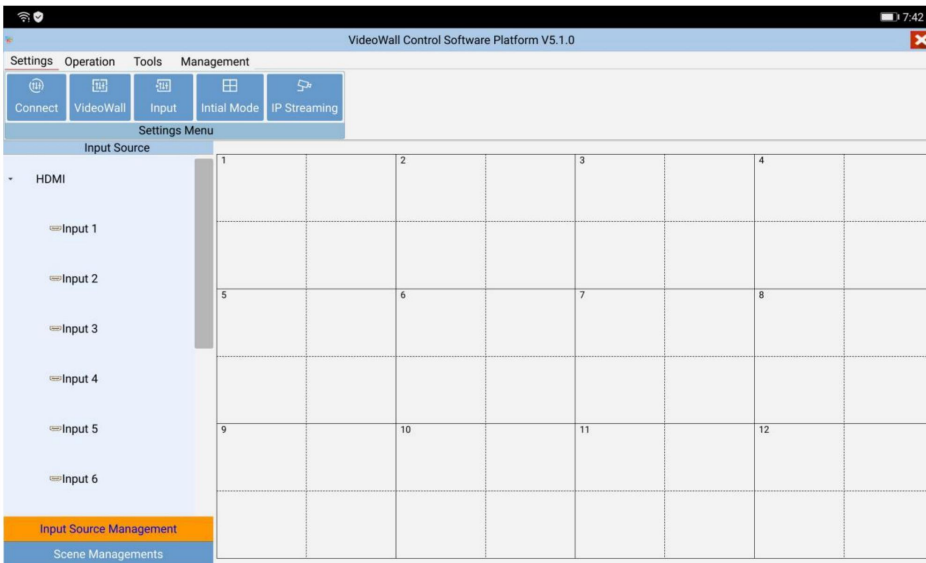


After login, it will be showing the similar to the PC control software, the operation tap:

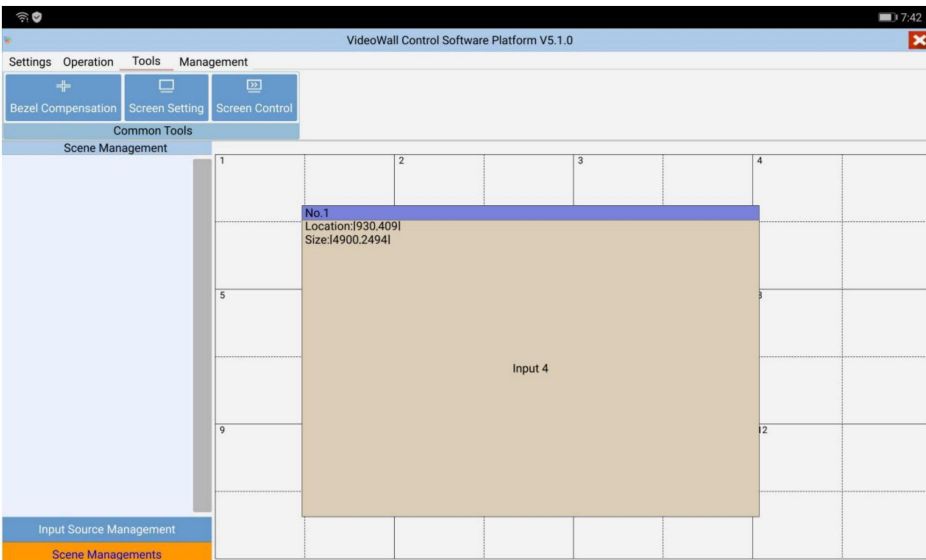


The Settings tap:





The tools tap:



And the management tap:

